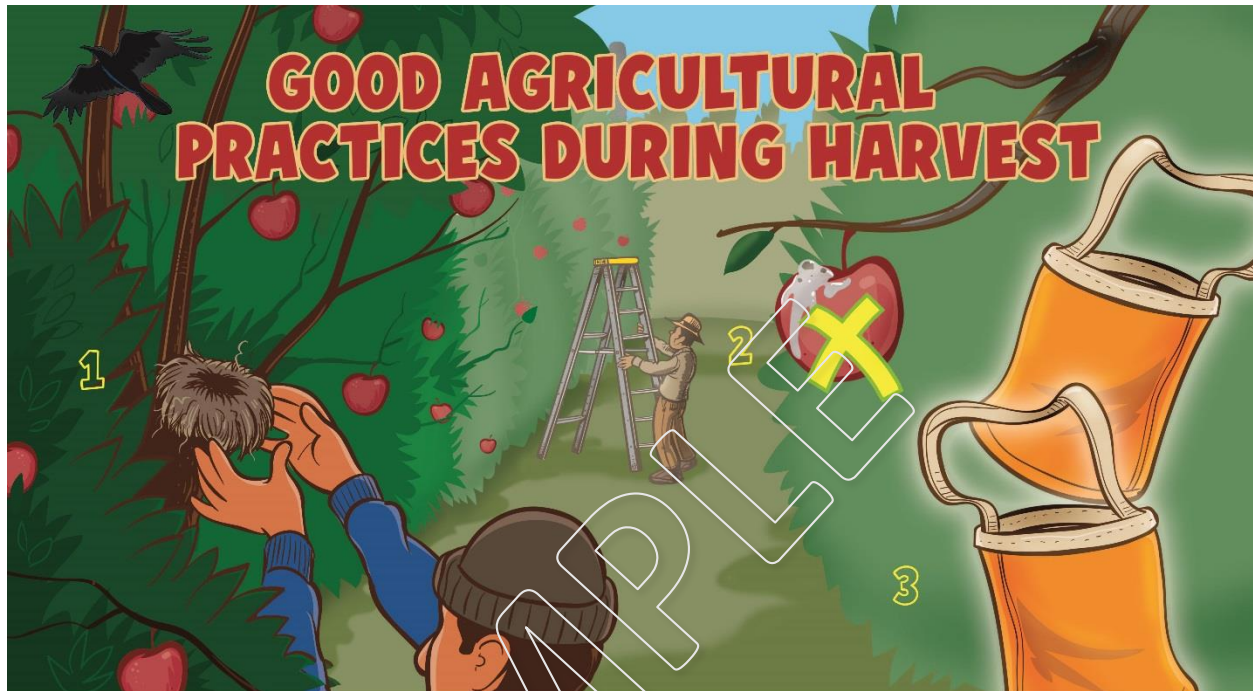


The Washington State Tree Fruit Association has developed posters for tree fruit orchards and packinghouses, designed to enhance food safety training efforts. These posters were produced with WSDA Produce Safety Program Grant funding.



GOOD AGRICULTURAL PRACTICES DURING HARVEST



- 1 **EVALUATE** CONTAMINATION RISKS BEFORE AND DURING HARVEST
- 2 **NEVER HARVEST** DROPPED PRODUCE OR FRUIT WITH FECES
- 3 **USE CLEAN** PICKING BAGS, BINS AND TOOLS

- 1 **EVALÚE** LOS RIESGOS DE CONTAMINACIÓN ANTES Y DURANTE LA COSECHA
- 2 **NUNCA COSECHE** PRODUCTOS CAÍDOS AL SUELO O CONTAMINADOS CON HECES
- 3 **USE CONTENEDORES** DE COSECHA, HERRAMIENTAS Y CAJAS LIMPIOS



- 4 **NEVER** TAKE PICKING BAG TO THE RESTROOM
- 5 **REPORT** INJURIES AND DISPOSE FRUIT CONTAMINATED WITH BLOOD
- 6 **TRY** MANIPULATING LADDERS FROM THE SIDE

- 4 **NUNCA** LLEVE LA BOLSA DE COSECHA AL BAÑO
- 5 **REPORTE** HERIDAS Y DESECHE FRUTA CONTAMINADA CON SANGRE
- 6 **TRATE** DE MANIPULAR LAS ESCALERAS POR SUS LADOS

WORKER HEALTH & HYGIENE



Washington
State Department of
Agriculture



Washington State
Tree Fruit Association

WASHINGTON STATE
UNIVERSITY



MAINTAIN PERSONAL CLEANLINESS
WEAR CLEAN GLOVES (IF USED)
USE DESIGNATED AREAS TO EAT
AND REST.

MANTENGA LIMPIEZA PERSONAL
USE GUANTES LIMPIOS (SI LOS USA)
USE ÁREAS DESIGNADAS PARA COMER
Y DESCANSAR

**SANITIZERS
DO NOT REPLACE
HAND WASHING!**

**¡LOS SANITIZANTES
NO REEMPLAZAN
EL LAVADO DE MANOS!**



DISPOSE TOILET PAPER IN THE TOILET
REPORT SYMPTOMS OF ILLNESS
OR INJURIES

WASH HANDS AFTER USING TOILET, AFTER
EATING, BEFORE RETURNING TO WORK,
WHEN HANDS MAY BE CONTAMINATED

BOTE EL PAPEL HIGIÉNICO EN EL INODORO
REPORTE SINTOMAS DE ENFERMEDAD
Y HERIDAS

LAVE SUS MANOS DESPUÉS DE USAR
EL BAÑO, DESPUÉS DE COMER, ANTES DE
VOLVER A TRABAJAR, CUANDO SUS MANOS
SE CONTAMINEN.

PREVENT CROSS-CONTAMINATION



Washington
State Department of
Agriculture



Washington State
Tree Fruit Association



WASHINGTON STATE
UNIVERSITY

PREVENGA LA CONTAMINACIÓN CRUZADA



KEEP IT CLEAN:
SWEEP, PICK UP TRASH, REMOVE CULL PILES.
CLEAN AND SANITIZE CLEANING TOOLS AFTER
EVERY USE

MANTENGA EL EMPAQUE LIMPIO: BARRA, RECOJA
LA BASURA, REMUEVA PILAS DE DESECHOS. LIMPIE Y
DESINFECTE LAS HERRAMIENTAS DE LIMPIEZA DESPUÉS
DE CADA USO.

REDUCE STANDING WATER:
SWEEP STANDING WATER TOWARDS DRAINS
TO AVOID PATHOGEN REPRODUCTION

BARRA EL AGUA ESTANCADA HACIA LOS DRENAJES
PARA EVITAR LA REPRODUCCIÓN DE PATÓGENOS

CLEANING SUPPLIES SUMINISTROS DE LIMPIEZA



KEEP IT ORGANIZED:
KEEP CLEANING TOOLS IN A DESIGNATED AREA.
ALWAYS STORE HOSES OFF THE FLOOR.

MANTENGA TODO EN ORDEN: MANTENGA
LAS HERRAMIENTAS DE LIMPIEZA EN UN ÁREA
DESIGNADA. SIEMPRE ALMACENE LAS
MANGUERAS FUERA DEL PISO

USE COLOR CODING:
SEPARATE TOOLS TO CLEAN
EQUIPMENT, FLOORS AND DRAINS.

USE CÓDIGOS DE COLOR:
SEPARA LAS HERRAMIENTAS PARA
LIMPIAR EQUIPO, PISOS Y DRENAJES.

STAY SAFE: WEAR APPROPRIATE
PERSONAL PROTECTIVE EQUIPMENT (PPE)
WHEN CLEANING AND SANITIZING THE
PACKING LINE. STORE BACK PPE AFTER ITS
USE.

CUÍDESE: USE EQUIPO DE PROTECCIÓN
PERSONAL (EPP) ADECUADO CUANDO
LIMPIE Y DESINFECTE EN LA EMPACADORA.
ALMACENE EL EPP DESPUÉS DE SU USO.



WELCOME TO OUR PACKINGHOUSE

Fruit is handled and washed with great care in our packinghouse, which reduces, but does not eliminate germs. So please, help us prevent contamination by following these simple steps:

HYGIENE FACT:
DID YOU KNOW THAT
THERE ARE APPROXIMATELY
5,000 BACTERIA ON YOUR
HANDS AT ANY
GIVEN TIME?



SIGN IN
REGÍSTRESE



REMOVE JEWELRY
AND WATCHES
REMUEVA JOYAS
Y RELOJES



WASH YOUR HANDS
LAVE SUS MANOS



PLEASE DON'T ENTER OUR
PACKINGHOUSE IF YOU ARE
FEELING SICK
POR FAVOR NO ENTRE A
NUESTRO EMPAQUE SI SE
SIENTE ENFERMO



ALWAYS STAY WITH
AN EMPLOYEE
PERMANEZCA SIEMPRE
CON UN EMPLEADO

LET US KNOW IF
YOU GET INJURED
DEJENOS SABER SI
SUFRE UNA HERIDA

DON'T TOUCH THE
EQUIPMENT OR FRUIT
NO TOQUE EL EQUIPO
O LA FRUTA

DON'T EAT, DRINK, SMOKE,
CHEW GUM OR TOBACCO
WHILE IN THE PACKINGHOUSE
NO COMA, BEBA, FUME O
MASTIQUE CHICLE O TABACO
EN EL EMPAQUE



Washington State
Tree Fruit Association



ENJOY YOUR VISIT!

© 2019 - Washington State Tree Fruit Association. All rights reserved.

WELCOME TO OUR FARM!

Fruit is handled with great care in our farm, so we can offer a safe and healthy product to you. Please help us prevent contamination of our fruit by following these simple steps:



1 SIGN IN - REGÍSTRESE

**2 REMOVE JEWELRY AND WATCHES -
REMUEVA JOYAS Y RELOJES**

**3 WASH YOUR HANDS -
LÁVE SUS MANOS**

**4 PLEASE DON'T ENTER OUR FARM
IF YOU ARE FEELING SICK -
POR FAVOR NO ENTRE A NUESTRA HUERTA
SI SE SIENTE ENFERMO**



**5 DON'T EAT, DRINK, SMOKE,
CHEW GUM OR TOBACCO
WHILE IN OUR FARM -
NO COMA, BEBA, FUME O
MASTIQUE CHICLE O TABACO
EN LA HUERTA**

**6 ALWAYS STAY WITH AN EMPLOYEE -
PERMANEZCA SIEMPRE CON UN EMPLEADO**

**7 LET US KNOW IF YOU GET INJURED -
DEJENOS SABER SI SUFRE UNA HERIDA**

**8 DON'T TOUCH THE FRUIT
ON TREES OR BINS -
NO TOQUE LA FRUTA DE LOS
ÁRBOLES O CAJAS**



ENJOY YOUR VISIT!

© 2019 - Washington State Tree Fruit Association. All rights reserved.

HANDWASHING GUIDE

WET HANDS

Moje sus manos



APPLY SOAP

Aplique jabón



SCRUB for 20 SECONDS

Restriegue por 20 segundos



RINSE

Enjuague



DRY WITH PAPER TOWEL or HAND DRYER

Seque sus manos con toalla de papel



THROW THE PAPER TOWEL in the TRASH

Arroje la toalla de papel en el basurero



Washington State
Tree Fruit Association



Washington
State Department of
Agriculture

HANDWASHING GUIDE

1 WET HANDS
Moje sus manos



2 APPLY SOAP
Aplique jabón



3 SCRUB for 20 SECONDS
Restriegue por 20 segundos



4 RINSE
Enjuague



5 DRY WITH PAPER TOWEL OR HAND DRYER
Seque sus manos con toalla de papel



6 THROW THE PAPER TOWEL in the TRASH
Arroje la toalla de papel en el basurero



DID YOU WASH YOUR HANDS? ***¿Ya lavó sus manos?***

Did you know that 80% of diseases are transmitted by touch, and that our hands have more than 3,000 germs at any given time??

Sabía que el 80% de enfermedades son transmitidas por tacto y que nuestras manos tienen más de 3,000 gérmenes en todo momento?

Please help us prevent the spread of germs in our orchard and wash your hands:

Por favor ayúdanos a detener a los gérmenes lavando tus manos:



After using the toilet
Después de usar el baño

Before starting or returning to work
Antes de empezar a trabajar



Before and after eating or drinking
Antes y después de comer o beber

After touching waste
Después de tocar basura



When your hands become contaminated
Cuando sus manos se contaminen

DID YOU WASH YOUR HANDS?

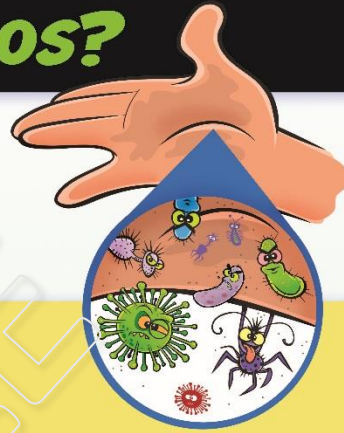
¿Ya lavó sus manos?

Did you know that 80% of diseases are transmitted by touch, and that our hands have more than 3,000 germs at any given time??

Sabía que el 80% de enfermedades son transmitidas por tacto y que nuestras manos tienen más de 3,000 gérmenes en todo momento?

Please help us prevent the spread of germs in our packinghouse and wash your hands:

Por favor ayúdanos a detener a los gérmenes lavando tus manos:



After using the toilet
Después de usar el baño



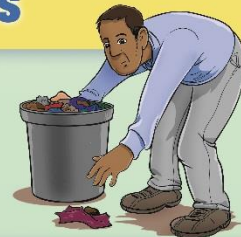
Before starting or returning to work
Antes de empezar a trabajar

Before and after eating or drinking
Antes y después de comer o beber



Before putting on gloves
Antes de ponerse guantes

After touching waste
Después de tocar basura



When your hands become contaminated
Cuando sus manos se contaminen



Washington State
Tree Fruit Association



Washington
State Department of
Agriculture

© 2020 Washington State Tree Fruit Association. All rights reserved.



These posters are proprietary information of Washington State Tree Fruit Association. Disclosure, copying, distribution, sale or taking of any action regarding the contents of these posters – except its direct delivery to the intended recipient – is strictly prohibited. These posters are not intended to be distributed to any third party without the written consent of Washington State Tree Fruit Association. These posters have been offered for their immediate use in orchards and packinghouses, and not for inventory purposes.

The recipient understands that the use of WSTFA's posters constitutes acceptance of the above conditions. On this basis, WSTFA is pleased to be able to provide our training materials.